

Garlock Expansion Joint Style 206 EZ-FLO®

EZ-FLO® expansion joints contain a single wide flowing arch, eliminating the need for filled arches on slurry services. It's self flushing arch design eliminates media build up and reduces turbulence.



DESIGN

- » Tube
 - Wide selection of elastomers available which are resistant to temperatures, weathering, oxidation and chemicals
 - Flowing arch design adds pressure resistance and reduces product buildup
- » Body
 - Rubber reinforced tire cord and polyester
- » Cover
 - Homogeneous layer of chlorobutyl elastomer extends to the outside edge of the flange

OPTIONAL CONFIGURATIONS

- » Extended Face-to-Face
- » Offsets, lateral, angular, and torsional
- » Custom drilling: ANSI, DIN, AWWA, BS, JIS, and special drilling patterns available on request

RETAINING RINGS

- » Required for all applications; provides metal surface to distribute bolt load evenly, preventing flange damage during bolt tightening
- » Standard material: mild steel with corrosion-resistant coating; galvanized or stainless steel also available

CONTROL UNITS/TIE RODS

- » Recommended on most applications to prevent damage due to excessive pipe movements
- » Standard material: mild steel, galvanized or stainless steel also available

METAL FLOW LINERS

- » Extends service life by providing protection from abrasive materials or solids, especially in high-velocity applications
- » Standard materials: stainless steel, other materials also available

SPECIAL LINER AND COVER MATERIALS

- » CSM » EPDM
- » Nitrile » Neoprene
- » Natural Rubber » FDA materials available
- » FKM Fluoroelastomer

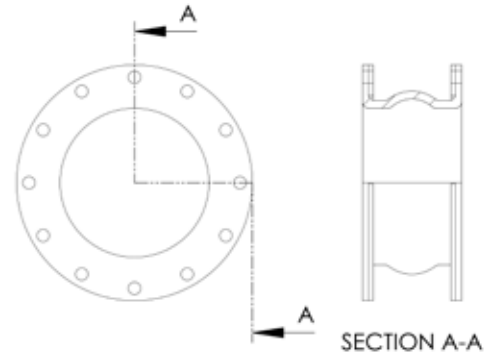
TEMPERATURE

- » Chlorobutyl/Nylon Cord/Natural Gum +180°F (82°C)
- » Standard Chlorobutyl/Nylon Tire Cord +250°F (+120°C)
- » Chlorobutyl/Kevlar* +300°F (+150°C)
with EPDM tube and cover

* Kevlar is a registered trademark of DuPont

CERTIFICATION & COMPLIANCES

- » Marine - ABS Type Approval
- » ASTM F1123/USCG Compliance
- » Canadian Registration (CRN)
- » Power Generation/Nuclear - 10CFR50 Appendix B, 10CFR21 and NQA-1 basic

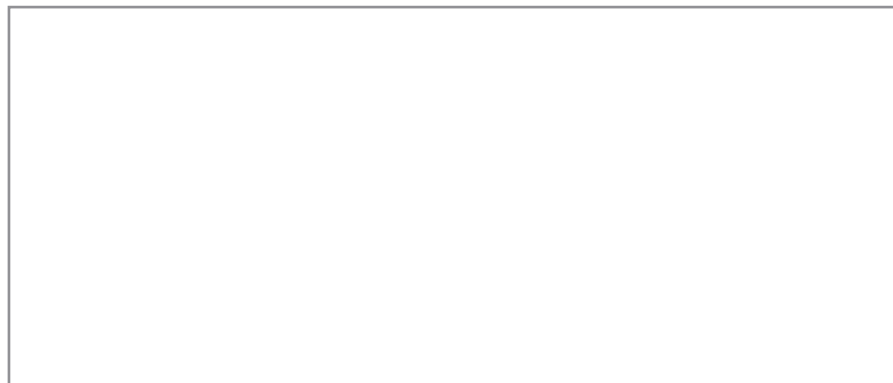


PRODUCT TABLE

Pipe Size I.D.		Movements					
		Compression		Lateral		Elongation	
inches	mm	inches	mm	inches	mm	inches	mm
1 - 5	25 - 100	3/4	19	1/2	13	3/8	10
6 - 18	125 - 450	1	25	1/2	13	1/2	13
20 - 24	500 - 600	1 1/4	29	1/2	13	1/2	13
26 - 40	650 - 1000	1 1/4	32	1/2	13	1/2	13
42 - 120	1050 - 3000	1 1/4	35	1/2	13	1/2	13

PRESSURE TABLE

Pipe Size I.D.		Pressure		Vacuum	
inches	mm	psi	bar	inch Hg	mm Hg
2 - 10	50 - 250	250	17	26	650
12	300	250	17	12	300
14	350	130	9	12	300
16 - 20	400 - 500	110	8	12	300
22 - 24	550 - 600	100	7	12	300
26 - 40	650 - 1000	90	6	12	300
42 - 66	1050 - 1650	80	5.5	12	300
68 - 96	1700 - 2400	70	5	12	300
98 - 108	2450 - 2700	60	4	12	300
110 - 120	2750 - 3000	50	3.5	12	300



GARLOCK

an *EnPro* Industries family of companies

Tel: 1-877-GARLOCK / 315.597.4811

Fax: 800.543.0598 / 315.597.3216

www.garlock.com

Garlock Sealing Technologies

Garlock Rubber Technologies

GPT

Garlock PTY

Garlock do Brasil

Garlock de Canada, LTD

Garlock China

Garlock Singapore

Garlock Germany

Garlock India Private Limited

Garlock de Mexico, S.A. De C.V.

Garlock New Zealand

Garlock Great Britain Limited

Garlock Middle East